

GPS S67-1575-256

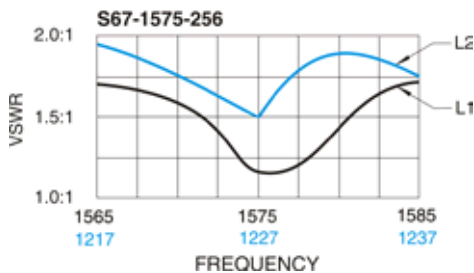


DESCRIPTION

S67-1575-256: This conformal L1/L2 active GPS antenna contains a 26.5 dB low noise amplifier that is integrated in the antenna housing which includes band pass filtering to provide out-of-band rejection. The antenna has an internal voltage regulator and accepts +4 to +24 VDC. D.C. bias is provided through the center conductor of the connector. This antenna provides omnidirectional coverage with a minimum gain of +1 dBic at zenith. The O.M.L. of the antenna may be changed to meet your specific requirement. The antenna is furnished with a right angle "SMA" connector and weighs eight (8) ounces.

FEDERAL AND MILITARY SPECS: MIL-STD-810, MIL-E-5400.

PERFORMANCE



1575 MHz
L1

1227 MHz
L2



RADIATION PATTERNS

SPECIFICATIONS

GPS

S67-1575-256

ELECTRICAL

Frequency	1565-1585 MHz (L1) 1217-1237 MHz (L2)
VSWR	≤ 2.0:1
Polarization	RHCP
Impedance	50 ohms
Axial Ratio	≤ 3 dBic @ Zenith
Gain Coverage (min) ...	-1.0 dBic 0° ≤ θ ≤ 75° -2.5 dBic 75° < θ ≤ 80° -4.5 dBic 80° < θ ≤ 85° -7.5 dBic θ = 90° @ Horizon
Gain (preamp)	26.5 dB
Noise Figure	3.0 dB
Power Handling	1 watt
Voltage	+4 to 24 VDC
Current	65 mA
Lightning Protection	DC grounded

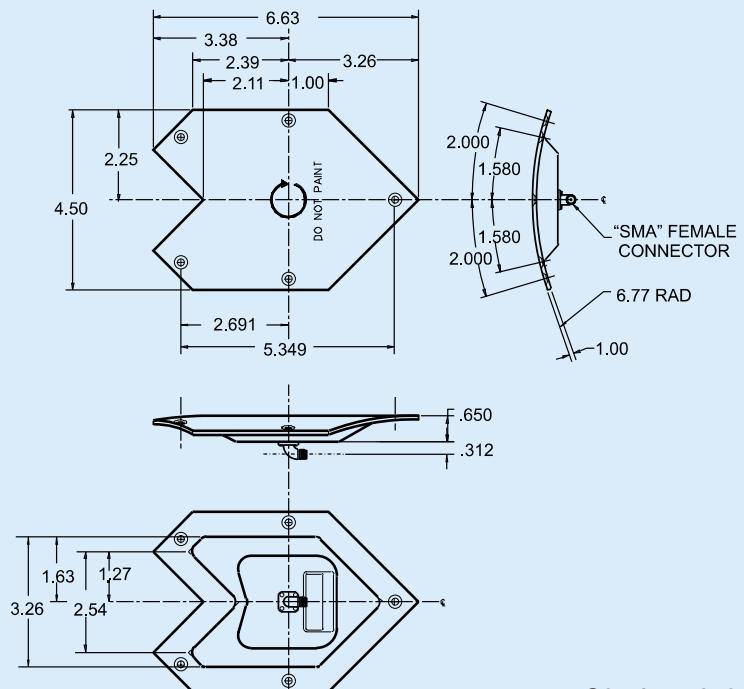
MECHANICAL

Weight	8 oz.
Width	4.50 in.
Length	6.63 in.
Material	6061-T6 aluminum / teflon glass
Finish	Iridite per AMS-C-5541
Connector	"SMA" female

ENVIRONMENTAL

Temperature	-80°F to +203°F
Vibration	10 G's
Altitude	70,000 ft.

OUTLINE DRAWING



S67-1575-256