

### DESCRIPTION

**S65-5366-895L:** Vertically-polarized, omni-directional L-Band antenna operating from 960 to 1220 MHz, compliant with UAT (978 MHz) and ADS-B (1090 MHz) TSO-166b system specifications. Also supports ATC Mode-S and DME applications. VSWR is less than 1.5:1 throughout entire frequency band.

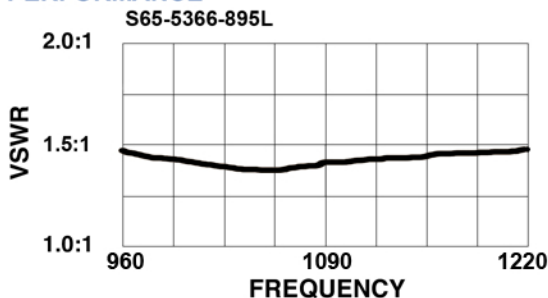
Transmit mode displays a gain of better than minus 3 dB over 90% of the coverage volume from 0 to 360 degrees in azimuth and 5 to 30 degrees above the ground plane when compared to the standard 1/4-wave monopole.

Receive mode has a gain of better than one dB over 90% of the coverage volume from 0 to 360 degrees in azimuth and -15 to + 20 degrees in elevation when compared to a 1/4-wave monopole.

Rugged, all-metal aluminum casting with a 4-hole bolt pattern. Unit is DC-grounded and hermetically-sealed. TNC connector, others available on request. For commercial, military and general aviation aircraft.

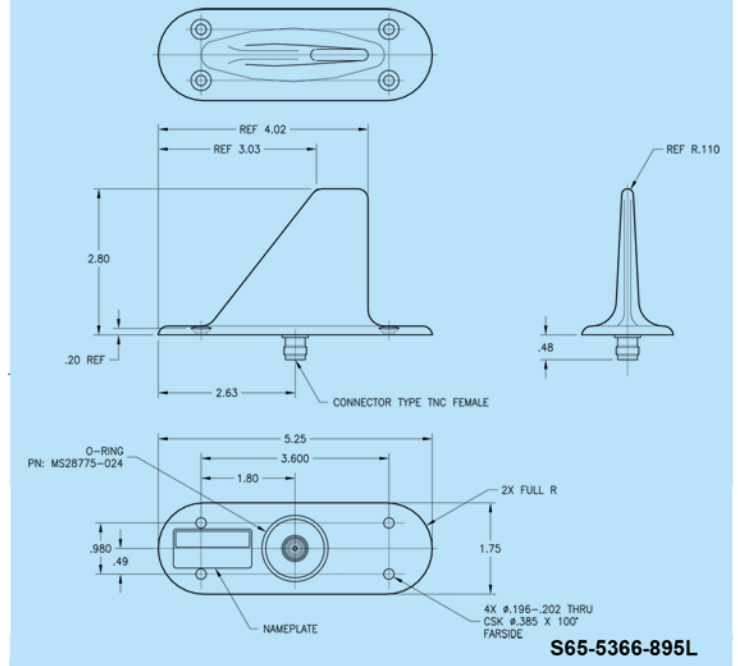
**FEDERAL & MILITARY SPECS:** FAA TSO-C166b, TSO-C74c, TSO-C66b, TSO-C154c, DO-160C, DO-160F, DO-260B, DO-282B, MIL-STD-810B, MIL-A-25708F, MIL-STD-877, MIL-HDBK-5400.

### PERFORMANCE



SPECIFICATIONS	FOR REFERENCE ONLY
<b>MODEL</b>	<b>S65-5366-895L</b>
<b>ELECTRICAL</b>	
<b>Frequency</b>	960-1220 MHz (L-Band, XPNDR) 1090 MHz +/-1 MHz (ADS-B) 978 MHz (UAT) 1030-1090 MHz (Mode S) 967-1213 MHz (DME)
<b>VSWR</b>	≤1.5:1
<b>Pattern</b>	Omni/Az Cos/EI
<b>Polarization</b>	Vertical
<b>Impedance</b>	50 ohms
<b>Power</b>	2000 w/peak 100 w/cont
<b>Lightning Protection</b>	DC grounded
<b>MECHANICAL</b>	
<b>Weight</b>	5.0 oz.
<b>Height</b>	2.80 in.
<b>Material</b>	A356-T61 aluminum casting
<b>Finish</b>	Skydrol-resistant enamel
<b>Connector</b>	TNC
<b>Drag</b>	1 oz. Mach .85@ 35,000 ft.
<b>ENVIRONMENTAL</b>	
<b>Temperature</b>	-65°F to +185°F
<b>Vibration</b>	10 Gs
<b>Altitude</b>	55,000 ft.

### OUTLINE DRAWING



ISO 9001:2000 and EN/JISQ/AS9100:2004 Registered