



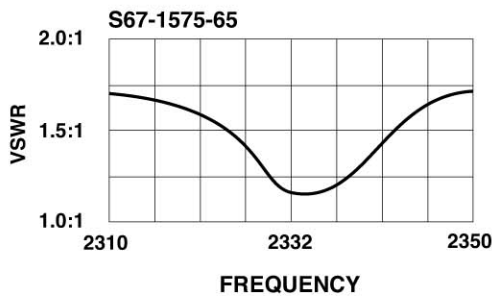
DESCRIPTION

S67-1575-65: Active, low-profile antenna designed for use with XM and Sirius radio receivers providing aviation weather information and cabin entertainment services. Integrated 29 dB amplifier with TNC connector.

Mechanical configuration consists of machined aluminum base with a spherical radius. Radome design and materials provide enhanced protection against rain, ice, and lightning strikes. 3½ inch diameter, ¾ inch height.

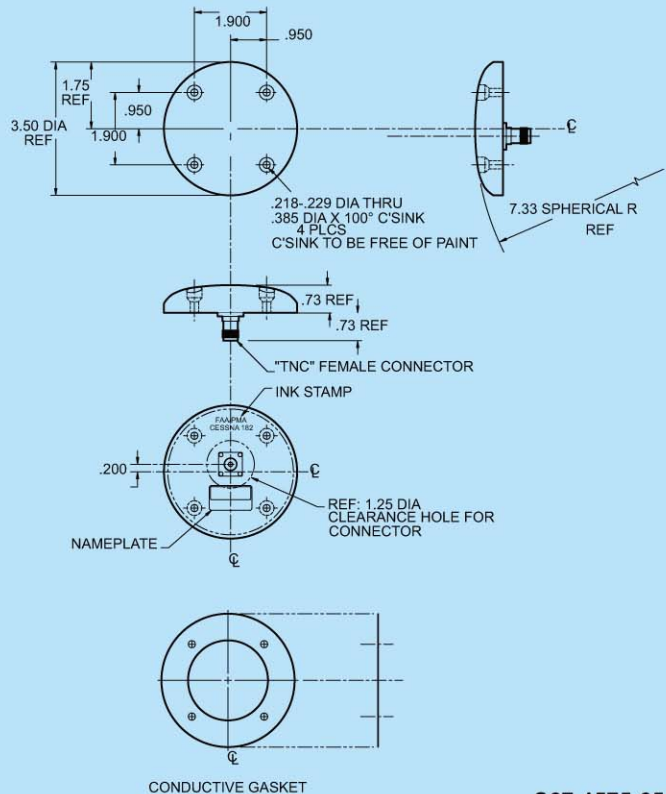
FEDERAL & MILITARY SPECS: D0-160C, MIL-STD-810, FAA PMA

PERFORMANCE



| SPECIFICATIONS | XM / SIRIUS |
|----------------------------|--|
| MODEL | S67-1575-65 |
| ELECTRICAL | |
| Frequency | 2326 ±7 MHz / 2338 ±7 MHz |
| VSWR | 2.0:1 |
| Polarization | RHCP |
| Impedance | 50 W |
| Power Handling | 100 mW (+20 dBm) |
| Gain | -1.0 dBic 0° < 0 < 75° -2.5 dBic 75° < 0 < 80° -4.5 dBic 80° < 0 < 85° -7.5 dBic -0 = 90° (@ HORIZON) |
| Gain (Preamplifier) | 29.5 ±3 dB |
| Supply Voltage | +3.3 TO +28 VDC @ 45 mA MAX |
| MECHANICAL | |
| Weight | 7 oz. |
| Height | .73 in. |
| Length | 7.85 in. |
| Diameter | 3.50 in. |
| Material | 6061-T6 aluminum |
| Finish | Skydrol-resistant enamel |
| Connectors | TNC Female |
| ENVIRONMENTAL | |
| Temperature | -55°C (-67°F) TO +85°C (+185°F) |
| Vibration | 10 Gs |
| Altitude | -100 to 55,000 ft |

OUTLINE DRAWING



Sensor Systems, Inc.

8929 Fullbright Ave., Chatsworth, CA 91311

Ph: 818-341-5366 Fax: 818-341-9059

Email: info@SensorAntennas.com

www.SensorAntennas.com

S67-1575-65