

UHF/Satcom/GPS S65-8282-136

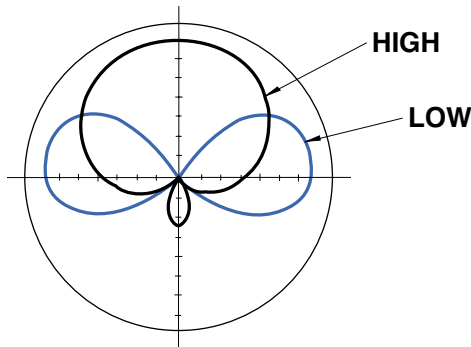


DESCRIPTION

S65-8282-136: UHF Satellite Communication antenna provides three functions from a single low-profile antenna footprint. The traditional low-angle, vertically-polarized blade can be used for air-to-air and air-to-ground communications. The high-angle RHCP element is usable for UHF Satcom. The broad cardioid pattern provides coverage for up to plus or minus 35 degrees from zenith. A L1/L2 GPS antenna is housed in the antenna to provide GPS function on the third output connector. Military application.

FEDERAL & MILITARY SPECS: MIL-E-5400, MIL-A-7772, MIL-A-9094 and MIL-STD-810.

PERFORMANCE



RADIATION PATTERNS



8929 Fullbright Avenue
Chatsworth, CA 91311 USA
818-341-5366 fax: 818-341-9059
email: info@sensorantennas.com
www.sensorantennas.com

SPECIFICATIONS

S65-8282-136

ELECTRICAL

Frequency	240-400 MHz (high angle UHF) 225-400 MHz (low angle UHF) 1565-1586 MHz (L1 GPS) 1217-1238 MHz (L2 GPS)
VSWR	1.5:1 (high angle) 2.0:1 (low angle) UHF and GPS
Pattern	Cardioid hemispheric RHCP (high angle) Omni/Az, Cos/EI (low angle)
Polarization	RHCP (high angle) UHF and GPS Vertical (low angle)
Impedance	50 Ohms
Power	200 watts CW (high angle) 200 watts CW (low angle)
Gain	7.0 dBic (high angle UHF) 2.0 dBic (low angle UHF) 3 dBic (GPS L1-L2)

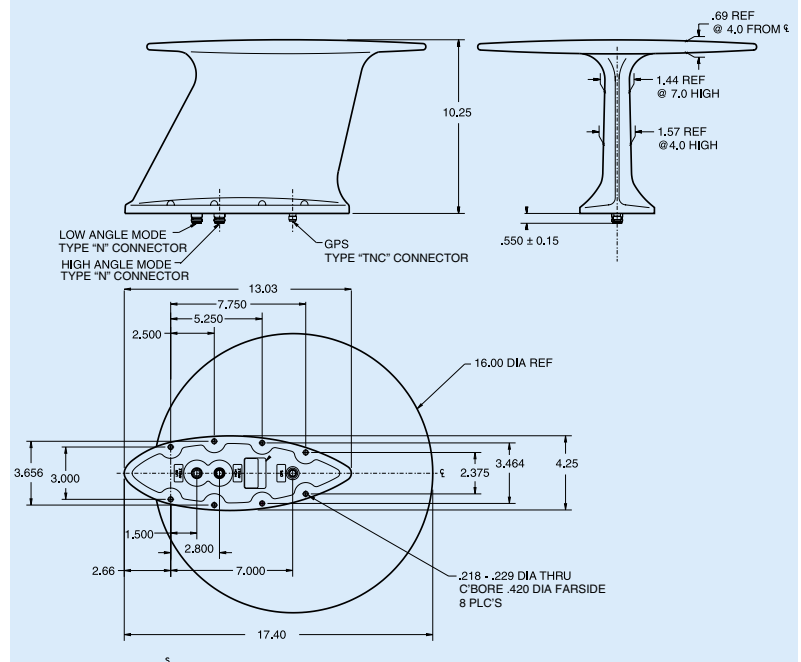
MECHANICAL

Weight	7.8 lbs.
Height	10.25 in.
Diameter	16.0 in.
Material	6061-T6 aluminum / glass
Finish	Skydrol resistant enamel
Connector	N, TNC
Drag	2.8 lbs. Mach .85 @ 35,000 ft.

ENVIRONMENTAL

Side Load	10 psi
Temperature	-77°F to +185°F
Vibration	10 G's
Shock	20 G's
Altitude	50,000 ft.

OUTLINE DRAWING



S65-8282-136