

VHF/GPS S65-8280-47

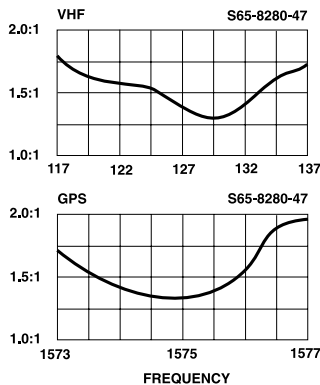


DESCRIPTION

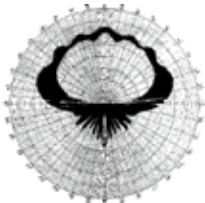
S65-8280-47: VHF all-metal blade antenna is top loaded with an ARINC 743 compliant active GPS antenna. Its dual function provides completely TSO'd GPS and VHF communication within the VHF blade footprint. S65-8280-47 is designed to operate with the Magellan CNS-12 digital radio system which functions as both a GPS navigation system and ACARS transceiver. The antenna may be installed on commuter aircraft and helicopters where antenna mounting space is at a premium. Installers will appreciate the simplicity of adding GPS to helicopters, since no major structural rework is required when replacing the VHF comm blade with this antenna.

FEDERAL & MILITARY SPECS: FAA-TSO C37d, C38d and C129. DO-160, MIL-E-5400, MIL-A-6271, MIL-A-7772 (ASG), MIL-A-9094.

PERFORMANCE



GPS RADIATION PATTERN



SPECIFICATIONS

| | VHF / GPS | |
|--------------------------|-----------------------------------|---|
| | VHF | GPS |
| | Dual Freq. S65-8280-47 | |
| ELECTRICAL | | |
| Frequency | 118-152 MHz | 1575.42 MHz |
| VSWR | 2.3:1 | 2.0:1 |
| Pattern | Omni/Az Cos/EI | — |
| Polarization | VERTICAL | RHCP |
| Impedance | 50 ohms | 50 ohms |
| Isolation | 40 dB | 30 dB |
| Power Handling | 25 watts | 1 watt |
| Lightning Protection ... | DC grounded | |
| Gain Coverage (min) ... | — | -1.0 dBic $0^\circ \leq \theta \leq 75^\circ$ -2.5 dBic $75^\circ < \theta \leq 80^\circ$ -4.5 dBic $80^\circ < \theta \leq 85^\circ$ -7.5 dBic $\theta = 90^\circ$ @ Horizon |
| Gain (preamp) | — | 26 dB |
| Voltage | — | +4.0 to +24 VDC |

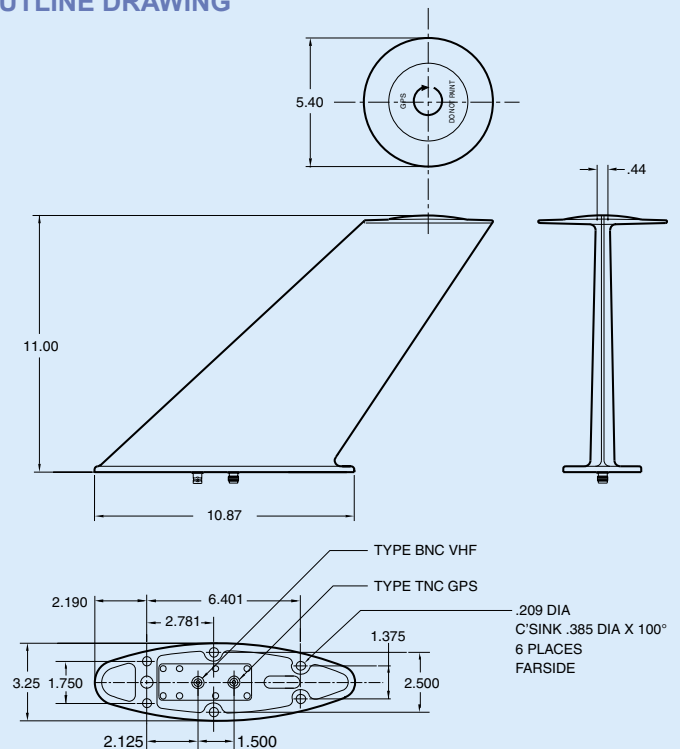
MECHANICAL

| | |
|-----------------|--------------------------------------|
| Weight | 3.6 lbs. |
| Height | 11.0 in. |
| Material | A356T61 aluminum / thermoset plastic |
| Finish | Skydrol resistant enamel |
| Connector | BNC TNC |
| Drag | 1.5 lbs. Mach .85 @ 35,000 ft. |

ENVIRONMENTAL

| | |
|-------------------|-----------------|
| Side Load | 12 PSI |
| Temperature | -60°F to +185°F |
| Vibration | 14 G's |
| Altitude | 60,000 ft. |

OUTLINE DRAWING



S65-8280-47



8929 Fullbright Avenue
Chatsworth, CA 91311 USA
818-341-5366 fax: 818-341-9059
email: info@sensorantennas.com
www.sensorantennas.com