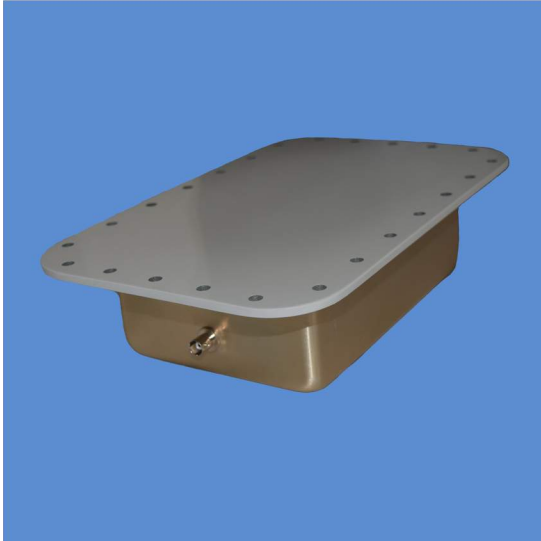


# Marker Beacon S35-2000-1



## DESCRIPTION

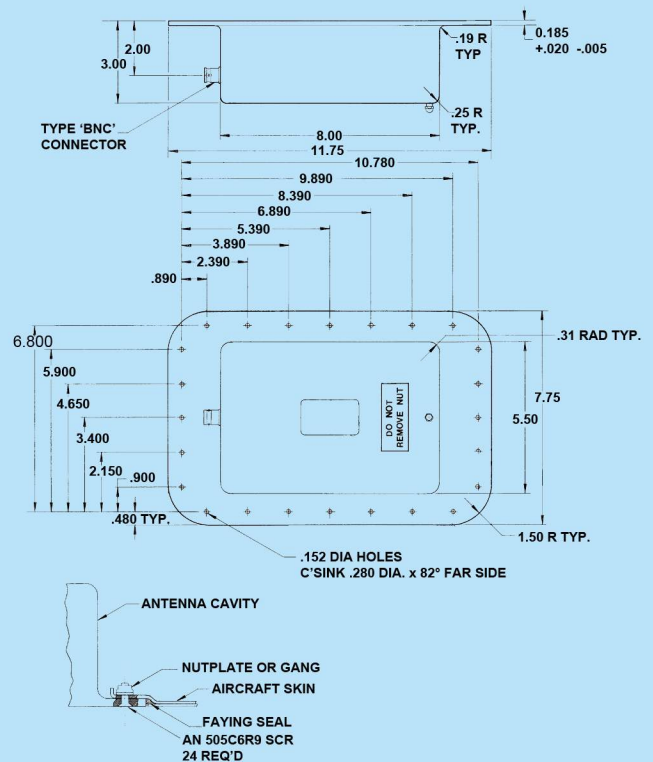
**S35-2000-1:** Highly reliable, flush-mounted, one-piece drawn aluminum can. Foam filled, epoxy glass radome. Hermetically sealed. DC grounded radiating element enables antenna to withstand lightning strike. Electrical characteristics similar to a short horizontal dipole, providing VSWR and radiation patterns per MIL-A-25367A. Ideal for ground clearance requirements and zero drag. Interchangeable with AT-536/ARN-type antennas. Boeing 747.

**NSN:** 5985 00 538 0741

**FEDERAL & MILITARY SPECS:** FAA TSO-C35c, MIL-A-25367A, MIL-E-5400H.

SPECIFICATIONS	
<b>MODEL</b>	<b>S35-2000-1</b>
<b>ELECTRICAL</b>	
<b>Frequency</b>	75 MHz
<b>VSWR</b>	1.5:1 @ 75 MHz 5.0:1 @ 75 ± .15 MHz
<b>Pattern</b>	Single Downward Lobe
<b>Polarization</b>	Linear Along Major Axis
<b>Impedance</b>	50 ohms
<b>Lightning Protection</b>	DC grounded
<b>MECHANICAL</b>	
<b>Weight</b>	1.9 lbs.
<b>Depth</b>	3 in.
<b>Material</b>	Aluminum Alloy / Fiberglass Radome
<b>Finish</b>	Skydrol Resistant Epoxy Enamel
<b>Connector</b>	BNC
<b>ENVIRONMENTAL</b>	
<b>Temperature</b>	-53°C (-65°F) to +73°C (+165°F)
<b>Altitude</b>	70,000 ft.

**S35-2000-1**



**Note: For Reference Only.**  
Contact Sensor Systems for latest engineering drawings.

