

Marker Beacon S35-3000-3



Description

This flush-mounted marker beacon antenna operates at 75 MHz. The antenna is fabricated from a one piece drawn aluminum can and is foam filled with an epoxy glass radome.

The **S35-3000-3** antenna is DC grounded to protect from lightning and is hermetically sealed for a long service life. The two side-mounted BNC connectors eliminates the need for a splitter in double marker beacon installations. The antenna is interchangeable with the Comant CI-165.

Federal & Military Certifications:

TSO-35d, DO-143, DO-160E and DO-160F.

Specifications

Electrical

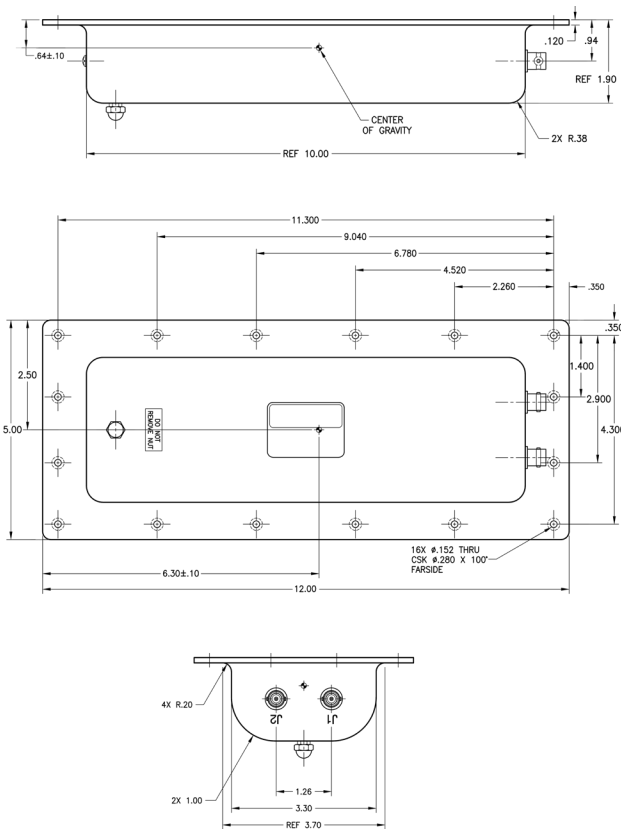
Frequency	75.0 MHz
VSWR	$\leq 1.5:1$ @ 75MHz $\leq 5.0:1$ @ 75 ± 0.15 MHz
Polarization	Horizontal
Pattern	Single Downward Lobe
Impedance	50 Ω

Mechanical

Weight	1.1 lbs.
Length	12.00 in.
Width	5.00 in.
Depth	1.90 in.
Material	Aluminum Alloy Cavity / Fiberglass Radome
Finish	Skydrol Resistant Polyurethane Enamel
Connector	BNC Female (2)

Environmental

Temperature (Operating)	-55°C (-67°F) to +71°C (+160°F)
Altitude	70,000 ft.



Please Note: For REFERENCE ONLY
Contact Sensor Systems for latest drawing



A HEICO COMPANY



Website: www.sensorantennas.com



Phone: 818-341-5366