

A white, arched, dome-shaped object, possibly a protective cover or a small structure, standing on a base with three visible legs. The object has a smooth, slightly reflective surface and a flat base. The base is supported by three small, cylindrical legs. The background is a plain, light gray.

This high-gain, dual port Glide Slope antenna has a built-in fault isolation network. The fiberglass radome is bonded over an alloy casting to provide high structural strength.

The antenna is certified for Category III aircraft and is interchangeable with Collins 37-P.

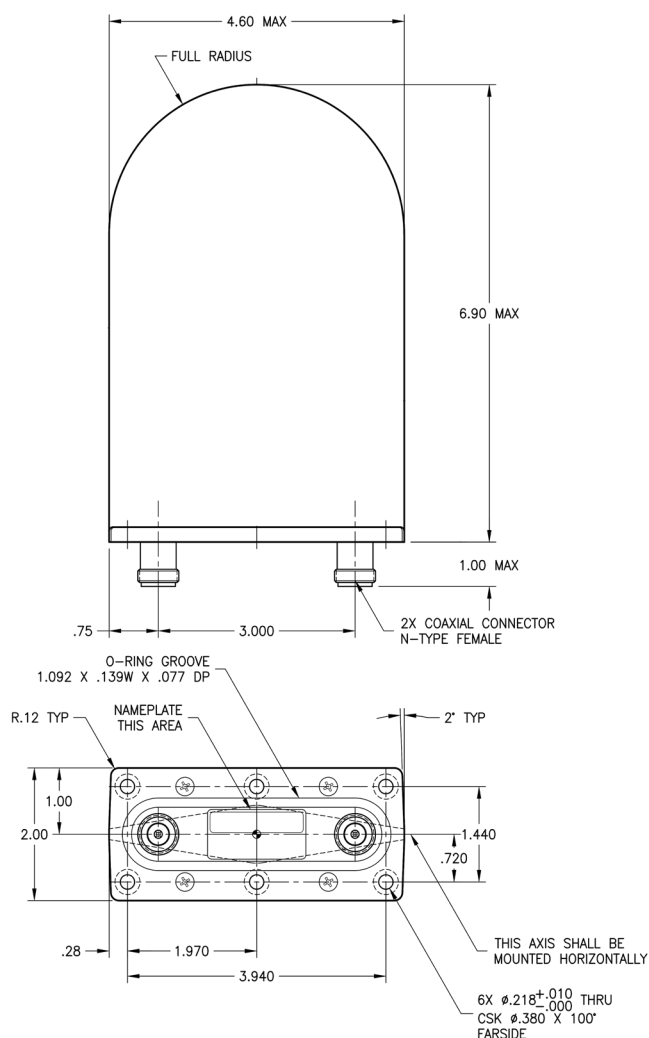
TSO-34b, DO-192, DO-160D/G, ARINC Characteristic 519, MIL-E-5272C, MIL-HDBK-5400 and MIL-STD-810C/D.

Electrical

Frequency	329-335 MHz
VSWR	≤2.0:1
Polarization	Linear (Horizontal)
Pattern	Cosinusoidal in Both E & H Planes
Impedance	50 Ω Nominal

Weight	8 oz.
Height	6.90 in. (Max.)
Lenght	4.60 in. (Max.)
Width	2.00 in.
Material	A356-T51 Casting / Epoxy Fiberglass Cover
Finish	Skydrol Resistant Polyurethane Enamel
Connector	N Female (2)

Temperature (Operating)	-55°C (-67°F) to +85°C (+185°F)
Altitude	50,000 ft.



**Sensor
Systems,
Inc.**

 Website: www.sensorantennas.com

Phone: 818-341-5366