

Glide Slope **S41422**



Description

This high-gain, dual port Glide Slope antenna has a built-in fault isolation network. The fiberglass radome is bonded over an alloy casting to provide high structural strength.

The **S41422** antenna is DC grounded to protect from lightning and is hermetically sealed for a long service life.

The antenna is certified for Category III aircraft and is interchangeable with Collins 37-P.

Federal & Military Certifications:

TSO-34e, ETSO-2C34f, DO-192, DO-160G, ARINC Characteristic 519, MIL-HDBK-5400 and MIL-STD-810C.

Specifications

Electrical

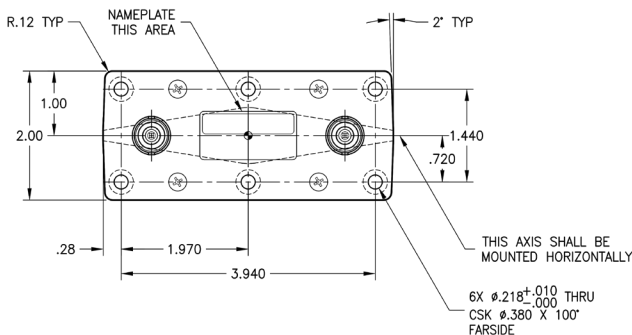
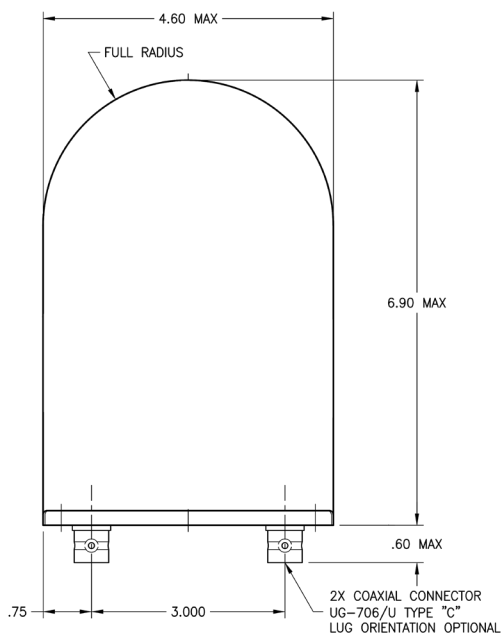
| | |
|--------------------|-----------------------------------|
| Frequency | 328.6-335.4 MHz |
| VSWR | ≤2.0:1 |
| Polarization | Linear (Horizontal) |
| Pattern | Cosinusoidal in Both E & H Planes |
| Impedance | 50 Ω Nominal |
| Cross Polarization | ≥10 dB Below Primary Polarization |

Mechanical

| | |
|-----------|---|
| Weight | 0.6 lbs. (Max.) |
| Height | 6.90 in. (Max.) |
| Length | 4.60 in. (Max.) |
| Width | 2.00 in. |
| Material | A356-T51 Casting / Epoxy Fiberglass Cover |
| Finish | Skydrol Resistant Polyurethane Enamel |
| Connector | C (2) |

Environmental

| | |
|-------------------------|---------------------------------|
| Temperature (Operating) | -55°C (-67°F) to +85°C (+185°F) |
| Altitude | 50,000 ft. |



Please Note: For REFERENCE ONLY
Contact Sensor Systems for latest drawing



A HEICO COMPANY



Website: www.sensorantennas.com



Phone: 818-341-5366