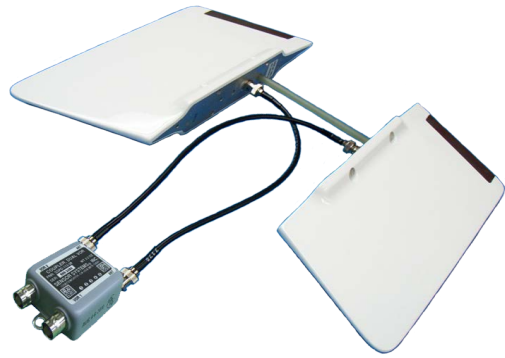


VOR / LOC S65-247-38



Description

S65-247-38: System consists of two blade antennas with stainless steel leading edges, 24-inch cables, alignment rod and phasing coupler. The system is a balanced loop design with omni-directional radiation pattern assuring maximum signal strength. The coupler included is for dual VOR installation. Designed for installation on general aviation aircraft as well as business jets and helicopters.

Phasing coupler/power divider SSPD-113-38 is tuned to the VOR antenna blades for dual VOR installations, eliminating the need for additional power dividers. (See SSPD-113-38 Data Sheet for further details).

Federal & Military Certifications: FAA TSO C36e, C-40c, DO-160D/G, MIL-STD-810 DIE, SAAB JS032-13-ER-00017

Specifications

Electrical

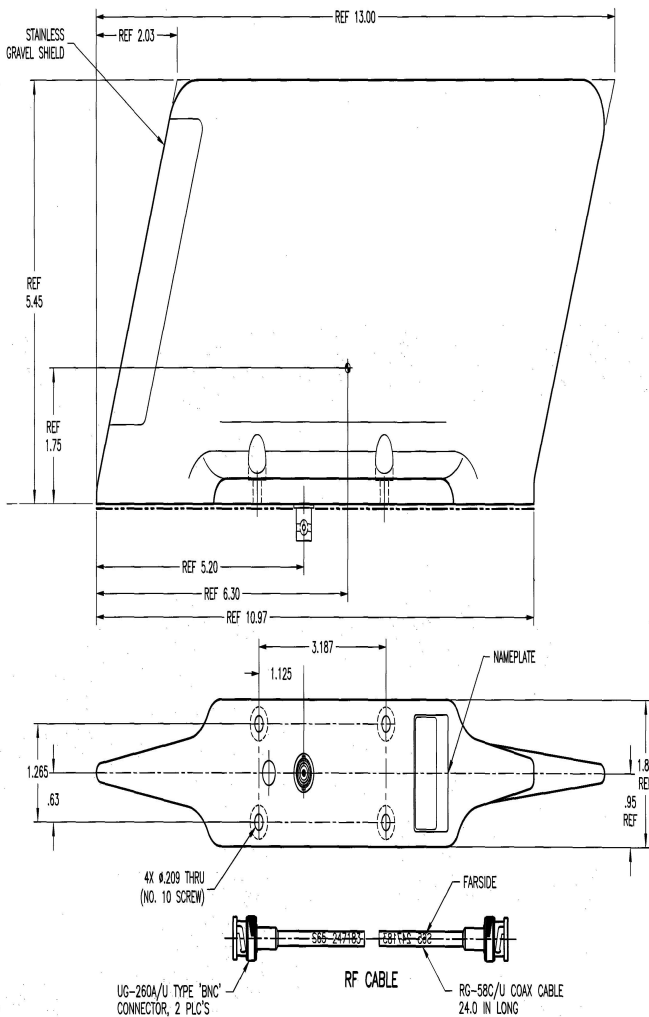
Frequency	108-118 MHz
VSWR	≤ 5.0:1
Polarization	Horizontal
Pattern	Omnidirectional
Impedance	50 Ω
Gain	0 ± 2dBi

Mechanical

Weight	2.7 lbs.
Height	5.45 in.
Length	13.00 in.
Width	1.89 in.
Material	Aluminum Alloy / Fiberglass / Stainless Steel
Finish	Skydrol Resistant Polyurethane Enamel
Connector	BNC Female
Drag	Mach 0.85 @ 35,000 ft = 1.2 lbs

Environmental

Temperature	-55°C (-67°F) to +71°C (+160°F)
Altitude	55,000 ft.



Please Note: For REFERENCE ONLY
Contact Sensor Systems for latest drawing