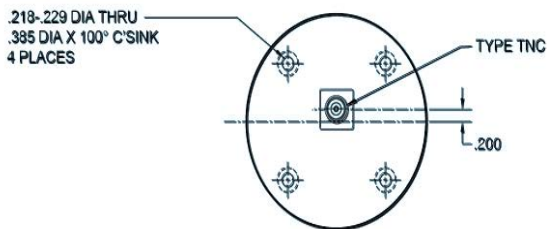
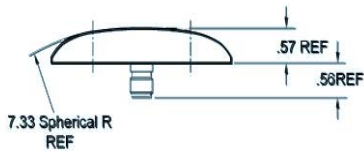
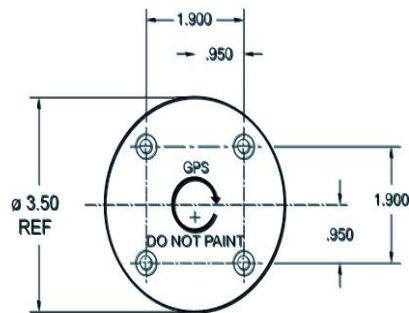


# GPS L1 Antenna S67-1575-39



Please Note: For REFERENCE ONLY  
Contact Sensor Systems for latest drawing

## Description

**S67-1575-39:** GPS L1 Antenna operates at 1575.42 MHz. Spherical radius molded radome provides enhanced protection against rain, ice and lightning strikes. Application for airborne, marine, ground vehicles and manpack installation. Internal 26 dB gain amplifier operates in a voltage range of +4 to +24 VDC which is provided through the coaxial connector.

**NSN:** 5985-01-470-8616 (green); 5985-01-441-5048 (white)

**FEDERAL & MILITARY SPECS:** FAA TSO C115a and C129, DO-160C, MIL-STD-810, MIL-C-5541, MIL-E-5400.

## Specifications

### Electrical

Frequency	1575.42 ± 2 MHz
VSWR	≤ 2.0:1
Polarization	RCHP
Gain Coverage (min)	-1.0 dBic 0° ≤ Ø ≤ 75°
	-2.5 dBic 75° ≤ Ø ≤ 80°
	-4.5 dBic 80° ≤ Ø ≤ 85°
	-7.5 dBic Ø = 90° @ Horizon
Gain (Preamp)	26.0 ± 3 dB
Impedance	50 Ω
Power Handling	100 mW (+20 dBm)
Voltage	+4 to +24 VDC @ 25 mA Max.
Axial Ratio	≤ 3.0 dB @ Zenith

### Mechanical

Weight	5 oz.
Height	.57 in.
Diameter	3.50 in.
Material	6061-T6 Aluminum / Thermoset Plastic
Finish	Skydrol Resistant Enamel
Connector	TNC Female

### Environmental

Temperature	-55°C (-67°F) to +85°C (+185°F)
Altitude	-100 ft. to 55,000 ft.



A HEICO COMPANY

Website: [www.sensorantennas.com](http://www.sensorantennas.com)

Phone: 818-341-5366