

# GPS L1/L2 Antenna **S67-1575-863**



## Description

**S67-1575-863:** Dual-band L1/L2 GPS active antenna provides coverage at 1227.6 MHz and 1575.42 MHz with a VSWR of 2.0:1. The 26.5 dB amplifier operates in a voltage range of 3.3 to 5.0 volts DC and is integrated under the radome. Additional filtering provides significant out-of-band rejection and reduced possibility of saturation by non-GPS signals. DC bias is provided through the coax connector. The spherical-radius, molded radome provides enhanced protection against rain, ice and lightning strikes. Qualified for high-speed military aircraft. Designed for use with PLGR, DAGR, and MAGR systems.

**NSN:** 5985-01-528-5187

**FEDERAL & MILITARY SPECS:** MIL-STD-810, MIL-HDBK-5400, DO-160, TSO-C129.

## Specifications

### Electrical

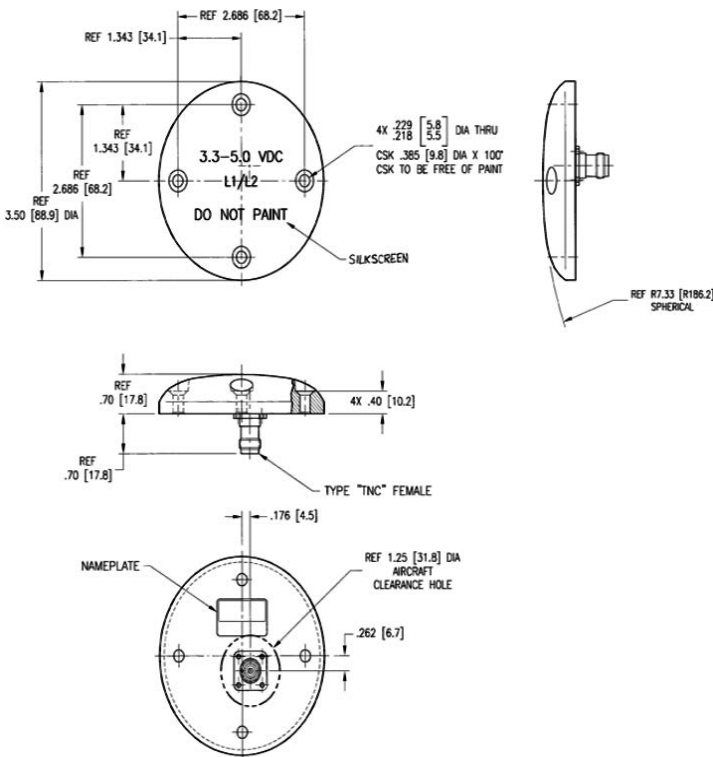
Frequency	L1:1565 - 1585 MHz L2: 1217 - 1237 MHz
VSWR	≤2.0:1
Polarization	RCHP
Gain	-1.0 dBic 0° ≤ Ø ≤ 75° -2.5 dBic 75° ≤ Ø ≤ 80° -4.5 dBic 80° ≤ Ø ≤ 85° -7.5 dBic Ø ≤ 90° @ Horizon
Gain (PreAmp)	26.5 ± 3 dB
Impedance	50 Ω
Power	1 Watt
Supply Voltage	+3.3 to +5.0 VDC @ 65 mA Max.
Axial Ratio	≤ 3 dBic @ Zenith

### Mechanical

Weight	7 oz.
Height	.40 in.
Diameter	3.50 in.
Material	6061-T6 Aluminum Alloy / Thermoset Plastic
Finish	Skydrol Resistant Enamel
Connector	TNC Female

### Environmental

Temperature (Operating)	-62°C (-80°F) to +95°C (+203°F)
Altitude	55,000 ft.



Please Note: For REFERENCE ONLY  
Contact Sensor Systems for latest drawing



A HEICO COMPANY

Website: [www.sensorantennas.com](http://www.sensorantennas.com)

Phone: 818-341-5366