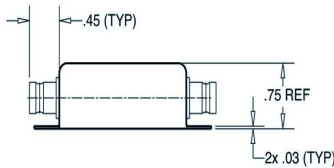
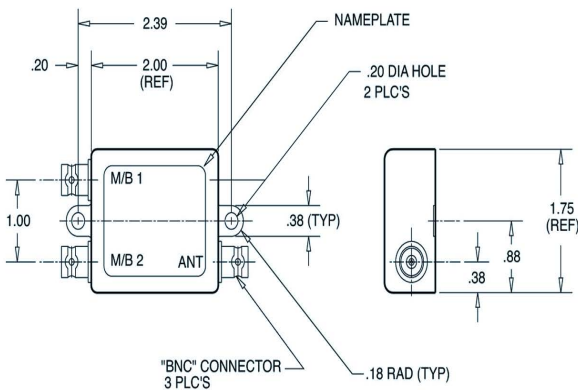
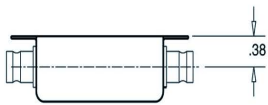


Dual Marker Beacon Coupler **SSPD-113-39**



Please Note: For REFERENCE ONLY
Contact Sensor Systems for latest drawing

Description

SSPD-113-39: Equal-power divider for marker beacon applications. The SSPD-113-39 Power Divider allows a single marker beacon antenna to be connected to two separate marker beacon receivers.

FEDERAL & MILITARY: RTCA/DO-160, MIL-STD-810

Specifications

Electrical

Frequency	75 MHz
VSWR	1.5:1 max.
Insertion Loss	.5 dB max
Isolation	20 dB min.

Mechanical

Weight	3 oz.
Height	.75 in.
Width	1.75 in.
Material	Tin-plated CR steel
Finish	Skydrol Resistant enamel, color flat gray
Connector	BNC Female (x3)

Environmental

Temperature	-65°F to +185°F
Altitude	55,000 ft.



A HEICO COMPANY

Website: www.sensorantennas.com

Phone: 818-341-5366