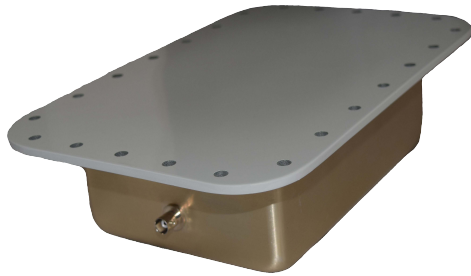


Marker Beacon S35-2000-6



Description

S35-2000-6: Highly-reliable, flush-mounted 75 MHz Marker Beacon Antenna. Constructed from a rugged one-piece drawn aluminum can, foam-filled with epoxy glass radome. DC-grounded radiating element enables the unit to withstand lightning strikes.

The electrical characteristics are similar to a short horizontal dipole; VSWR and radiation patterns per MIL-A-25367A. TNC Female connector. Interchangeable with AT-536/ ARN-type antennas. Boeing 747.

Federal & Military Certifications:

TSO-C35c, BAC D-16046, MIL-A-25367A, MIL-E-5400H.

Specifications

Electrical

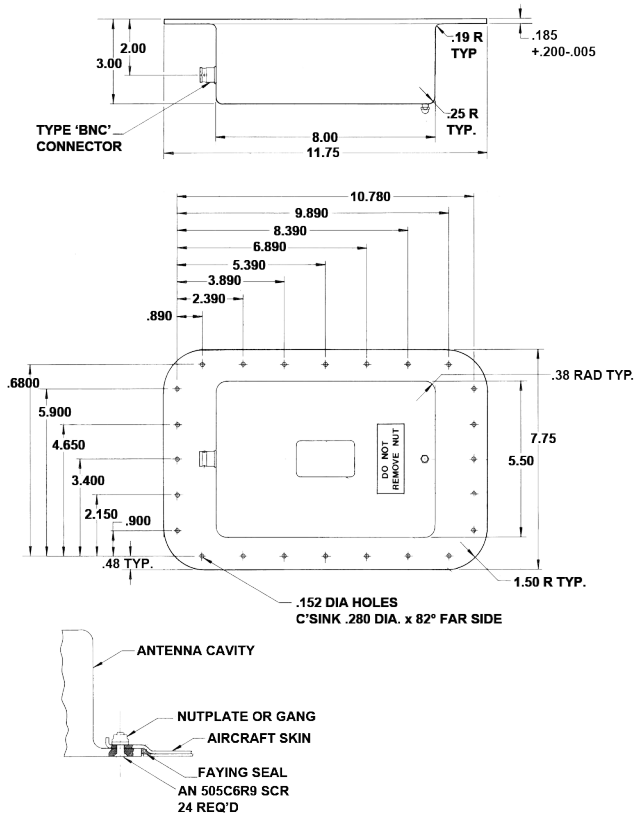
| | |
|--------------|---------------------------------------|
| Frequency | 75 MHz |
| VSWR | 1.5:1 @ 75MHZ 5.0:1 @ 75 ±0.15 MHz |
| Polarization | Linear along Major Axis |
| Pattern | Single Downward Lobe |
| Impedance | 50 Ω |

Mechanical

| | |
|-----------|--------------------------------------|
| Weight | 1.9 lbs. |
| Length | 11.75 in. |
| Width | 7.75 in. |
| Depth | 3.00 in. |
| Material | Aluminum Alloy/Fiberglass Radome |
| Finish | Skdrol-Resistant Polyurethane Enamel |
| Connector | TNC Female |

Environmental

| | |
|-------------------------|---------------------------------|
| Temperature (Operating) | -54°C (-65°F) to +74°C (+165°F) |
| Altitude | 70,000 ft. |



Please Note: For REFERENCE ONLY
Contact Sensor Systems for latest drawing



A HEICO COMPANY

Website: www.sensorantennas.com

Phone: 818-341-5366